



Heritage Warrington Center

863 Easton Road, Warrington, PA 18976

- New 61,000 s.f., 3-story, Class A office building, minutes from Doylestown
- Elevator-serviced building with atrium lobby
- Build-to-suit general & medical offices
- Excellent corporate headquarters facility with high visibility from Rte. 611
- Parking at 5 spaces/1,000 s.f.
- Bank, restaurant & day care on site
- Signalized intersection
- Serviced by SEPTA Bus #55
- Less than 15 minutes from PA Turnpike



Demographic Information

	1M	3M	5M
2009 Population Estimate	8,348	47,306	139,511
2009 Household Estimate	2,991	16,250	50,567
2009 Est. Average Household Income	\$80,759	\$86,980	\$81,093

For more information call:

Matthew S. Katzen
215-491-7700

mkatzen@heritagebuildinggroup.com

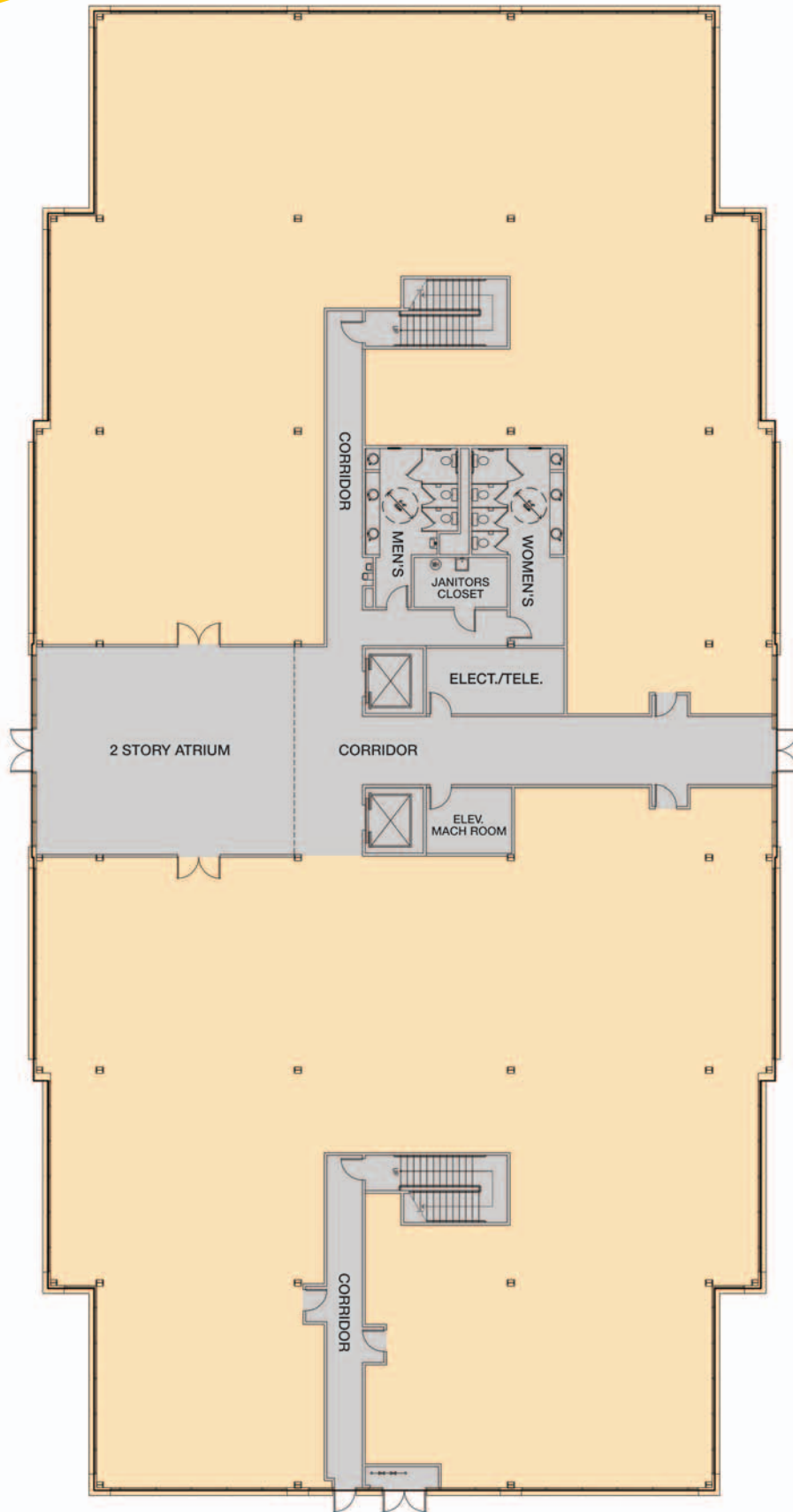
Heritage Center at Warrington

863 Easton Road
Warrington, PA 18976

1st Floor
18,173 s.f.

2nd Floor
19,478 s.f.

3rd Floor
20,925 s.f.



The foregoing information was furnished to us by sources which we deem to be reliable, but no warranty or representation is made as to the accuracy thereof. Subject to correction of errors, omissions, change of price, prior sale or withdrawal from market without notice.